

PROJECT NAME LANDSCAPE

LIGHTING SITE PLAN &
SPECIFICATIONS

JUNE 02, 2025

LANDSCAPE /EXTERIOR

PROJECT SIZE: Firepit Seating Area, Entry,
Pathways, Surrounding landscape

PROJECT SCOPE:

1. Area of scope
 - Provide fixture specifications for:
 - Adjustable Accentlights, Adjustable Floodlights
 - Pathlights
 - Tree mounted area light
 - Tree uplights
2. (Not Included: installation, site visits, linear accentlight, power supply)
3. Photometric Studies (As needed on pathways)
4. Details (As needed)

Path Lights



Tree Uplighting



Tree Accentlighting



OVERALL SITE PLAN

SCOPE

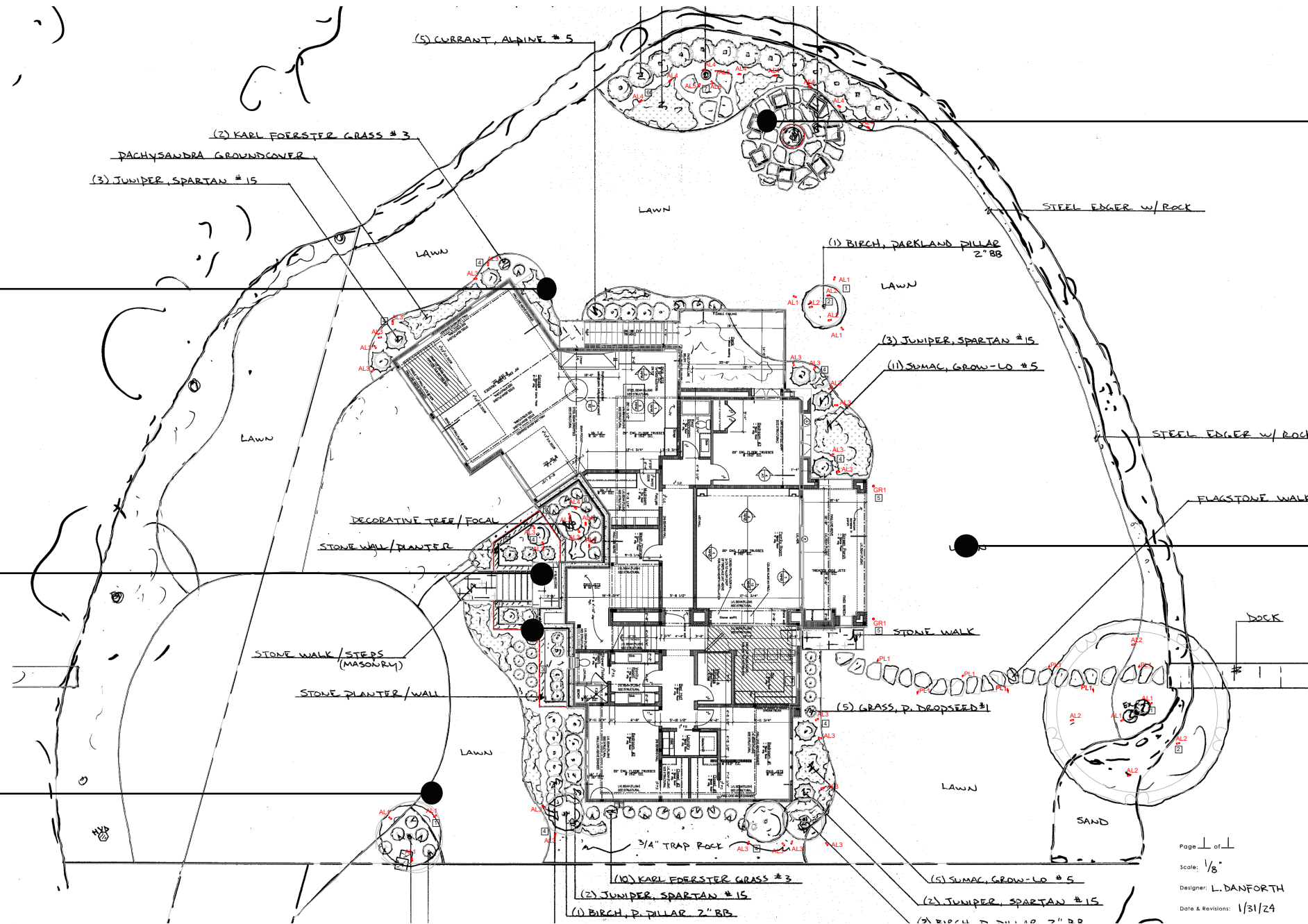
Side Landscape

Back Entrance

Side Landscape

Firepit/Flag Area

Entry/ Pathway



Page 1 of 1
Scale: 1/8"
Designer: L. DANFORTH
Date & Revisions: 1/31/24



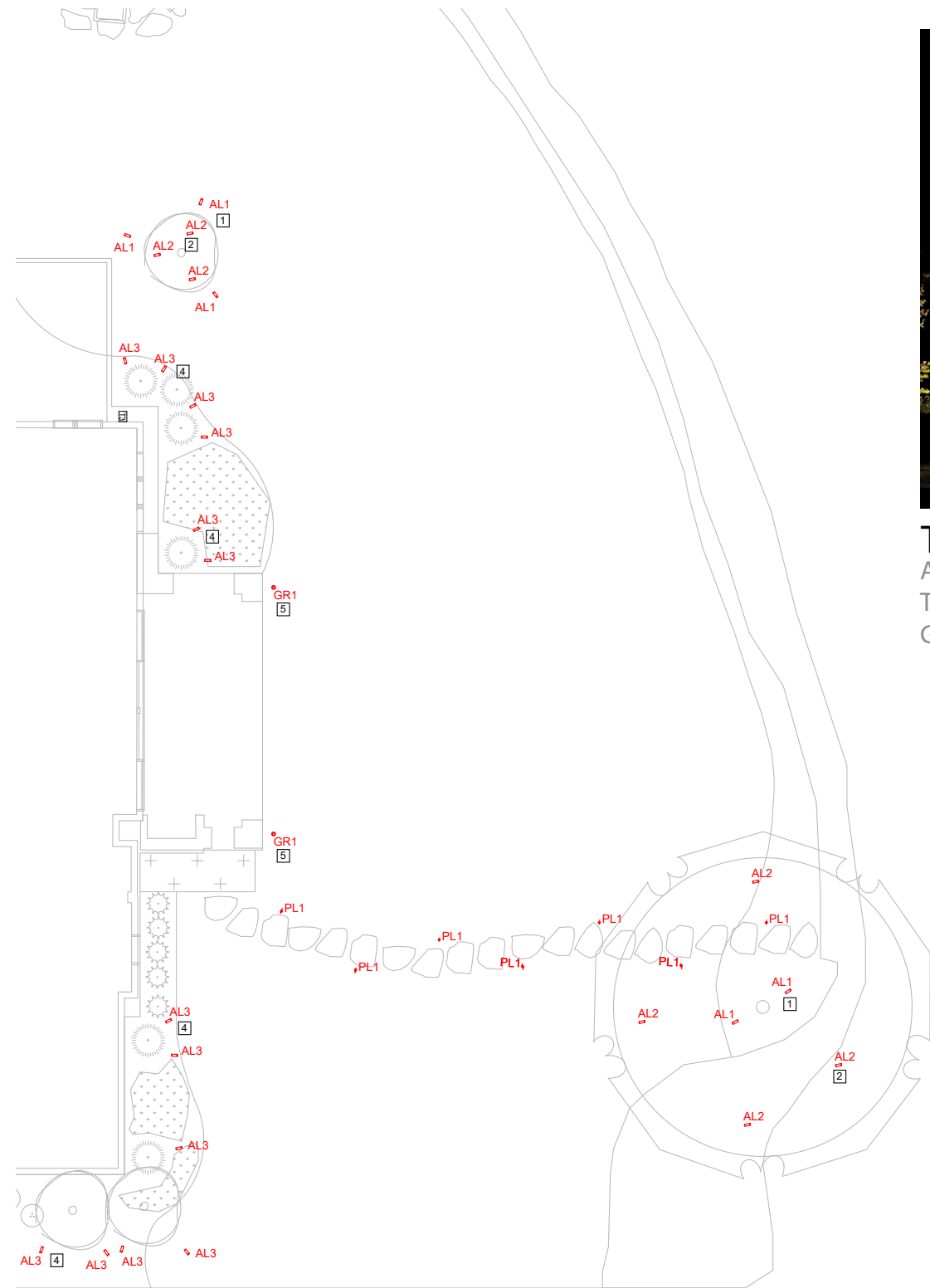
OVERALL LANDSCAPE LIGHTING PLAN



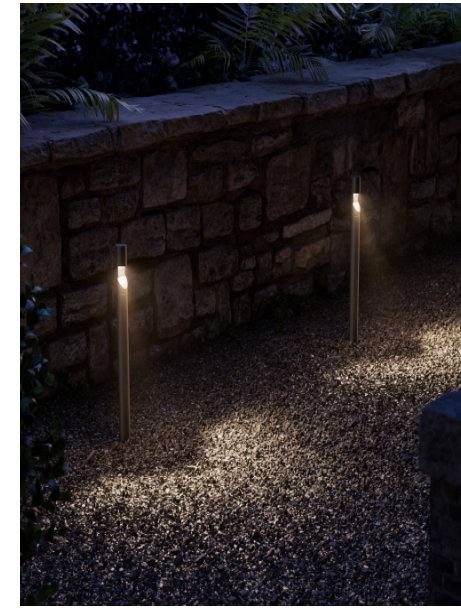
DRAWING NOTES

- 1 STAKE MOUNTED UPLIGHT WITH MEDIUM BEAM TO UPLIGHT UNDERSIDE OF TREE. FIXTURES TO BE INSTALLED APPROXIMATELY 6" TO 1" FROM TRUNK TO START, FINAL LOCATION TO BE DETERMINED ON SITE SO SOME OF THE TRUNK IS LIT AND UNDERSIDE OF TREE CANOPY HAS SOFT GENERAL LIGHTING AS WELL. CONCEAL WIRING FROM VIEW, INSTALL FIXTURE PER MANUFACTURER RECOMMENDATIONS.
- 2 J-BOX MOUNTED TREE UPLIGHTS TO PROVIDE INTERNAL GLOW TO TREE CANOPY. FIXTURES TO BE MOUNTED WHERE THEY ARE CONCEALED AND PROVIDE GENERAL ILLUMINATION, CONCEAL WIRING AS BEST AS POSSIBLE AND INSTALL IN A SECURE ORANGE FASHION ON BACK SIDE OF TREE MINIMIZING DIRECT VIEW FROM HOME OR STREET. INSTALL FIXTURE PER MANUFACTURER RECOMMENDATIONS.
- 3 WET LISTED LINEAR ACCENTLIGHT INTEGRATED UNDER STONE CAP OF PLANTER TO LIGHT VERTICAL SURFACE AND GRAZE MATERIAL TO CREATE CONTRAST IN THE SPACE AND ADD AMBIENT LIGHTING. FIXTURE TO BE CONCEALED FROM VIEW, INSTALL FIXTURE PER MANUFACTURER RECOMMENDATIONS, FIXTURE PROVIDED BY OTHERS.
- 4 STAKE MOUNTED UPLIGHT WITH MEDIUM BEAM TO UPLIGHT UNDERSIDE OF TREE. FIXTURES TO BE INSTALLED APPROXIMATELY 6" FROM TRUNK TO HIGHLIGHT IT AND APPROXIMATELY 8" AROUND PERIMETER TO LIGHT TREE CANOPY. FINAL LOCATION TO BE DETERMINED ON SITE PER FINAL TREE INSTALLATION, INSTALL FIXTURE PER MANUFACTURER RECOMMENDATIONS.
- 5 SMALL IN GRADE UPLIGHTS TO PROVIDE ACCENTLIGHTING ON PORCH COLUMNS. FINAL LOCATIONS TO BE DETERMINED ON SITE, CONCEAL WIRING FROM VIEW, INSTALL FIXTURES PER MANUFACTURER RECOMMENDATIONS TO ENSURE PROPER WET LISTED RATINGS.
- 6 STAKE MOUNTED FLOOD LIGHTS TO LIGHT HEDGES AROUND FLAG POLE AND FIRE PIT AREA TO CREATE A SOFT WASH BACKDROP. FINAL LOCATION OF LIGHT TO BE COORDINATED WITH LOCATION OF TREE SO ALL TREES HAVE SIMILAR WASH OF LIGHT. INSTALL FIXTURE PER MANUFACTURER RECOMMENDATIONS.
- 7 STAKE MOUNTED ADJUSTABLE ACCENTLIGHTS WITH NARROW BEAM TO LIGHT FLAG POLE AT NIGHT, PLACE FIXTURES FROM 18" TO MAX 36" AWAY FROM POLE. THREE FIXTURES TO BE AIMED AT FLAG CROSS ARMS BEAMS TO MINIMIZE SHADOW OF POLE. INSTALL FIXTURES PER MANUFACTURER RECOMMENDATIONS.
- 8 LINEAR INTEGRATED INTO FIRE PIT TO PROVIDE ACCENTLIGHT AT SEATING AREA. FIXTURE TO BE COORDINATED WITH FINAL FIRE PIT DESIGN, CONCEAL FIXTURE FROM VIEW, INSTALL FIXTURE PER MANUFACTURER RECOMMENDATIONS, FIXTURE PROVIDED BY OTHERS.

ENTRY AND PATHWAY ENLARGED LIGHTING PLAN



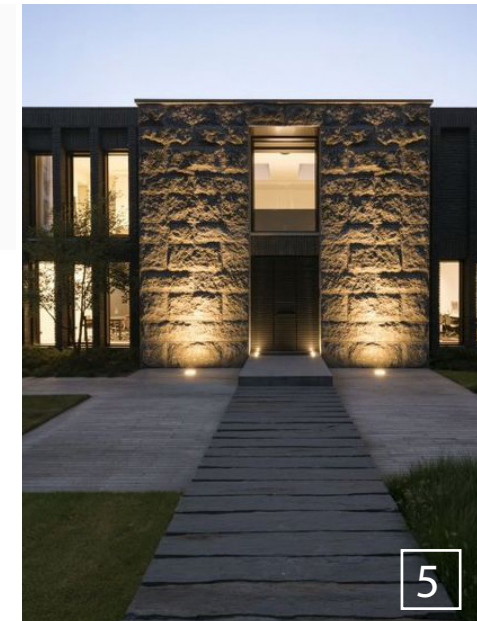
TREE MOUNTED DOWNLIGHTS
ADJUSTABLE ACCENTLIGHTS INTEGRATED INTO TREES A WITH WIDE BEAM TO PROVIDE INTERNAL GLOW TO TREE CANOPY



PATH LIGHTS
WET LISTED LED PATHLIGHTS WITH SINGLE ILLUMINATION TO LIGHT PATHWAY



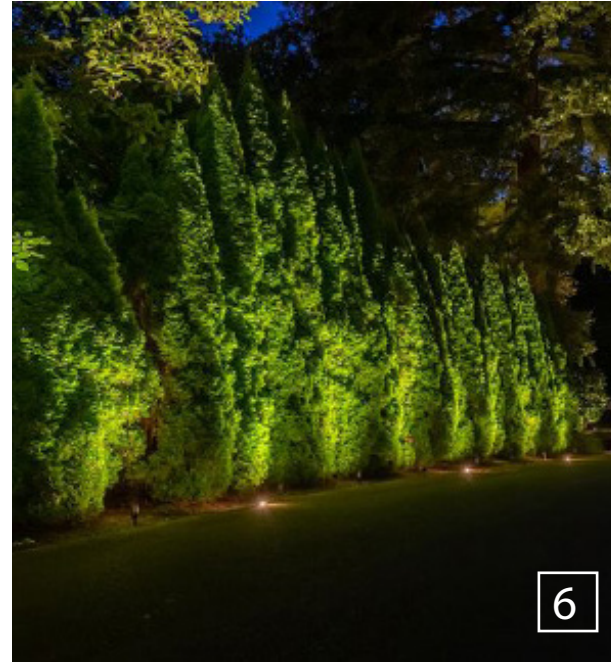
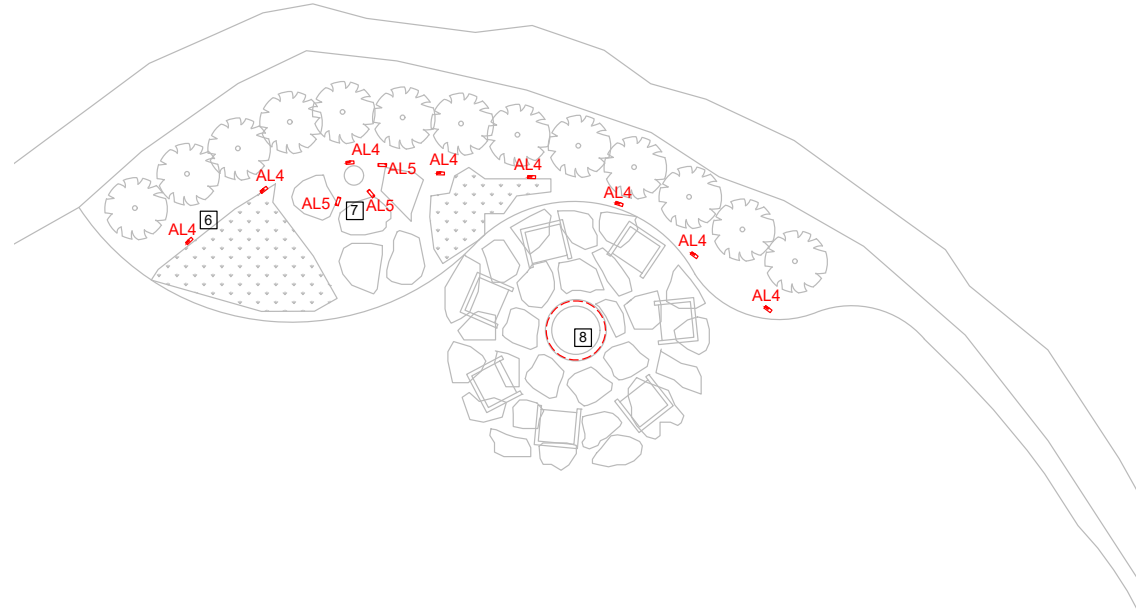
TREE UPLIGHTING
STAKE MOUNTED ADJUSTABLE ACCENTLIGHTS TO UPLIGHT TREES



INGRADE UPLIGHTING
INGRADE UPLIGHTS TO HIGHLIGHT ENTRY COLUMNS



FIREPIT SEATING AREA/ FLAG POLE ENLARGED LIGHTING PLAN



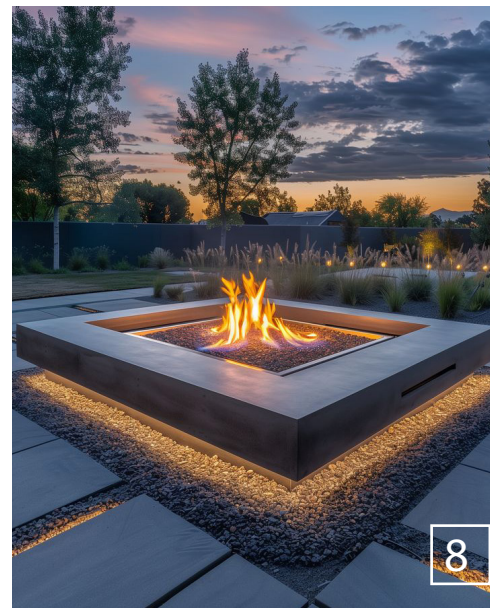
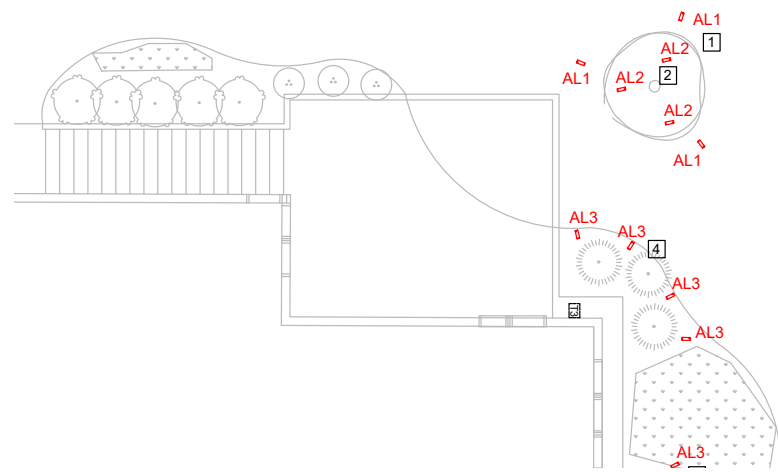
LANDSCAPE FLOOD

STAKE MOUNTED FLOOD LIGHTS TO UPLIGHT HEDGE AREA



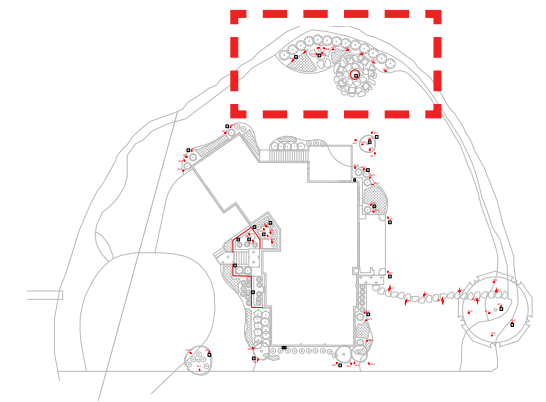
FLAG POLE LIGHTING

STAKE MOUNTED FLOOD LIGHTS TO UPLIGHT FLAG AND POLE

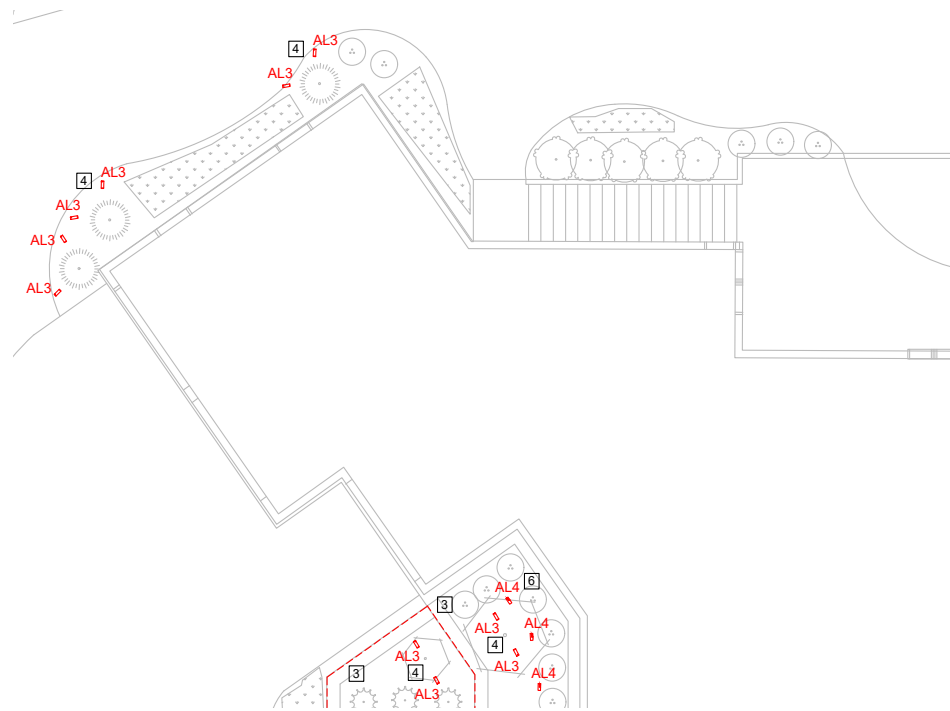


FIREPIT

WET LISTED LINEAR LED INTEGRATED INTO BASE OF FIREPIT TO PROVIDE ACCENT LIGHTING AT SEATING AREA



SIDE LANDSCAPE ENLARGED LIGHTING PLAN



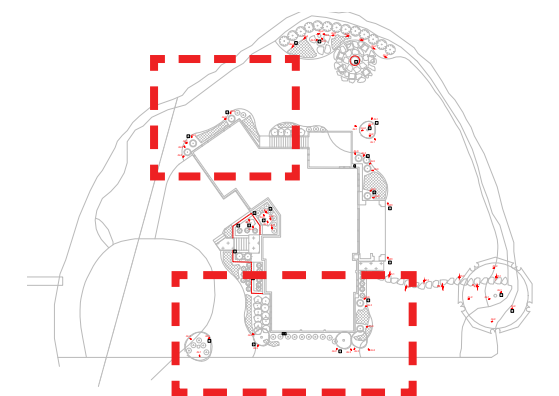
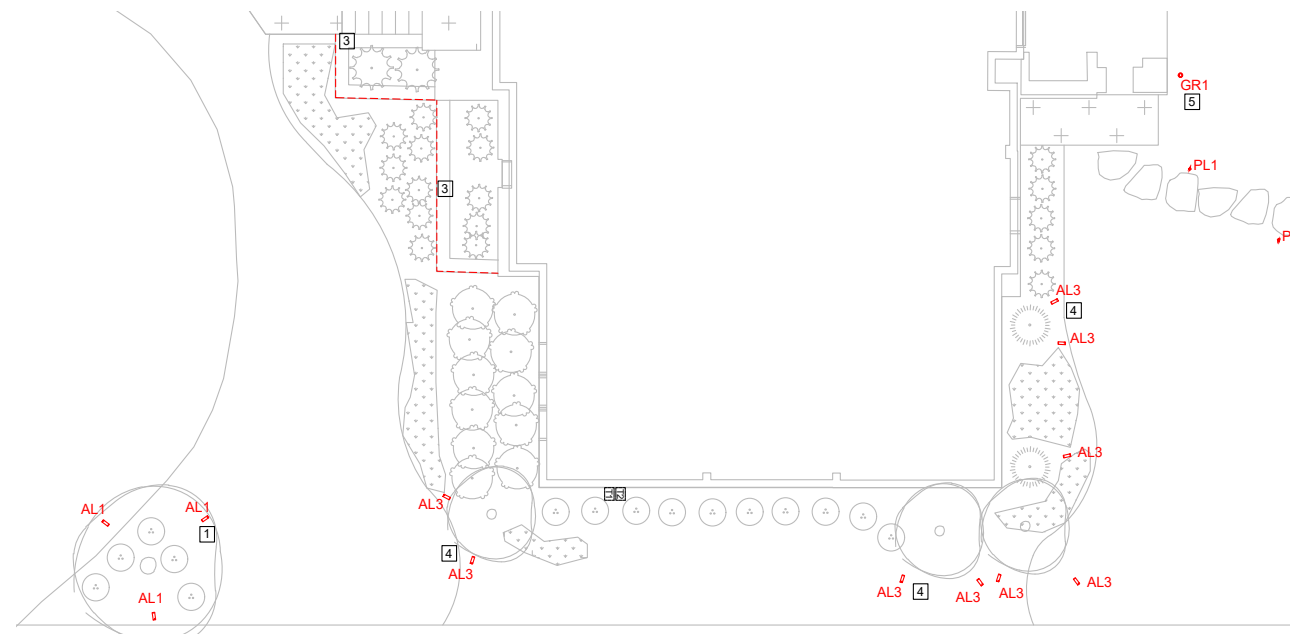
TREE UPLIGHTING

STAKE MOUNTED ADJUSTABLE ACCENTLIGHTS TO UPLIGHT THE UNDERSIDE OF TREE CANOPY

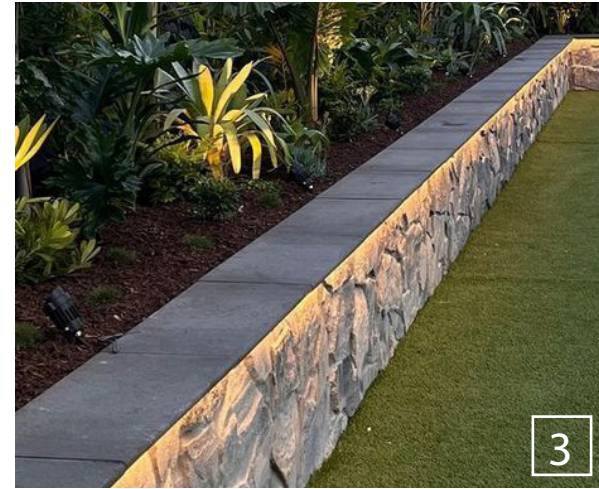
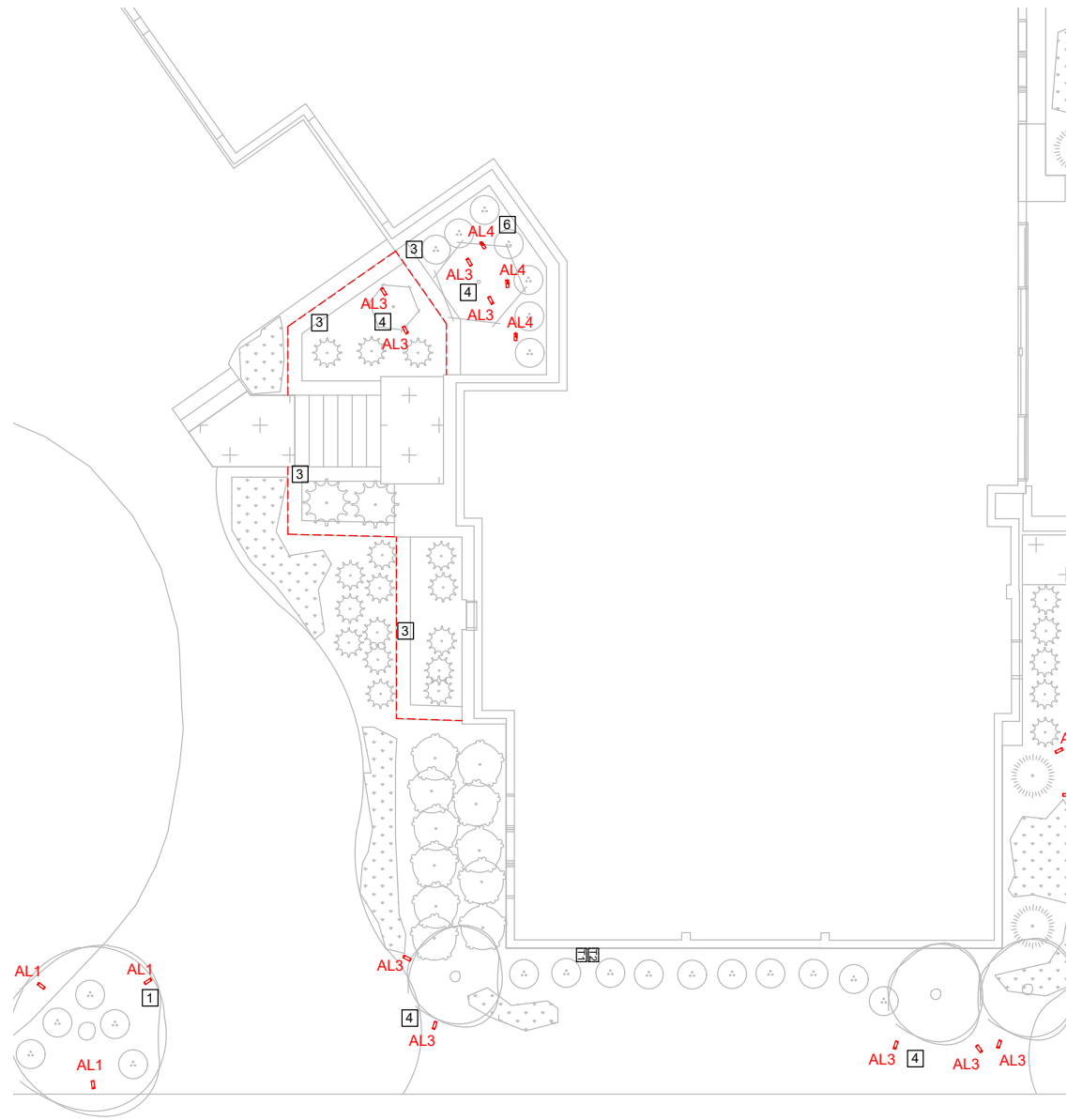


NARROW TREE UPLIGHTING

STAKE MOUNTED UPLIGHTS FROM TWO SIDES TO UPLIGHT AND GIVE CONTRAST



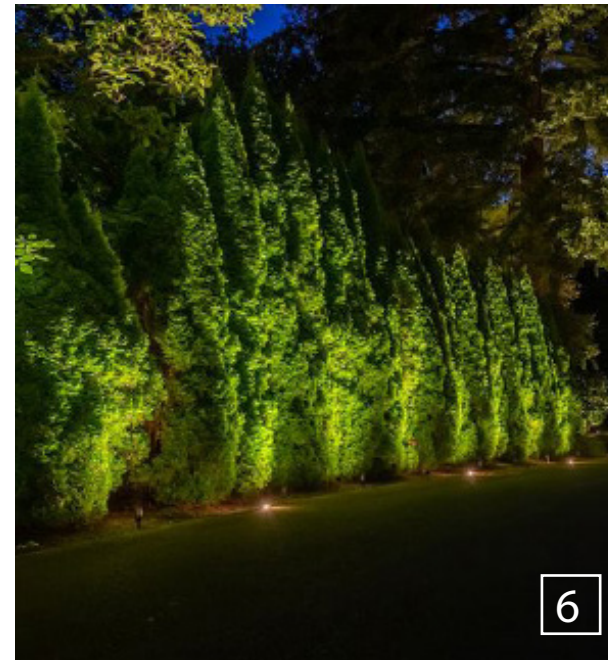
BACK ENTRY ENLARGED LIGHTING PLAN



LINEAR ACCENTLIGHT
LINEAR INTEGRATED INTO PLANTER WALL
TO PROVIDE ACCENT



TREE UPLIGHTING
STAKE MOUNTED ADJUSTABLE ACCENTLIGHTS TO UP-
LIGHT THE UNDERSIDE OF TREE CANOPY



LANDSCAPE FLOOD
STAKE MOUNTED FLOOD LIGHTS TO UPLIGHT
HEDGE AREA



FIXTURE SCHEDULE

TYPE	QUANTITY	DESCRIPTION	CATALOG NUMBER	Voltage	Lead Time	Notes
AL1	8	Ground Stake Mounted with (3) Spike Adjustable Accentlight, Side Pivot, Glare Shield, Medium Optics, Black Finish	ARTOAL11-SR-012V-07W-30-M-BK with AGSA-11-BK, AMH02-06-BZ	12v	2-4 weeks	Finish to be confirmed Color Temperature to be confirmed prior to procurement
AL2	7	Tree Mounted with 2.7" Round Surface Box, Adjustable Accentlight, Center Pivot, Glare Shield, Wide Optics, Black Finish	ARTOAL08-SR-012V-03W-30-W-BK with AGSA-08-BK, ACMLJ-BK	12v	2-4 weeks	Finish to be confirmed Color Temperature to be confirmed prior to procurement
AL3	25	Ground Stake Mounted Adjustable Accentlight, 12" pvc single prong, Side Pivot, Glare Shield, Medium Optics, Black Finish	ARTOAL08-SR-012V-03W-30-M-BK with AGSA-08-BK, AMHCS-12-BZ	12v	2-4 weeks	Finish to be confirmed Color Temperature to be confirmed prior to procurement
AL4	11	Ground Stake Mounted Adjustable Floodlight, 12" pvc single prong, side pivot, Black finish	ARTOFL16-R-012V-08W-30-BK with AMHCS-12	12v	2-4 weeks	Finish to be confirmed Color Temperature to be confirmed prior to procurement Mounting accessory to be confirmed with soil type
AL5	3	Ground Stake Mounted flag uplights, 12" Stainless steel 3 prong spike (12v), Bronze finish, 950lm. Adjustable optics 14-70deg.	ARTOAL16-SR-012V-10W-30-A-BK	12v	2-4 weeks	Finish to be confirmed Color Temperature to be confirmed prior to procurement Mounting accessory to be confirmed with soil type
GR1	2	In-grade Fixture, 12V, 3W, 3000K, Wide Optics (51deg), Black Finish	ZXL08-IIGM-12V-3-30-51-BK-SOL	12v	12-14 weeks	
PL1	9	Path light, single side, 18" height, black finish	ARTOPLMB-R1-012V-03W-30-18-BK with AJB-1 and AMCS-12	12v	2-4 weeks	Finish to be confirmed Color Temperature to be confirmed prior to procurement
T"#"	5	Transformers as needed	ATXM-300-OTR-SS			Final number required to be confirmed once desig layout is approved

GENERAL NOTES:

1. QUANTITIES SHOWN ARE ESTIMATED , FINAL NUMBER MAY BE DIFFERENT DEPENDING ON SITE CONDITIONS AND IF ADDITIONAL LANDSCAPE NOT SHOWN ON DESIGN PACKAGE WILL BE INCLUDED IN SCOPE OF WORK
2. TRANSFORMER LOCATIONS TO BE COORDINATED ON SITE. CONCEAL FROM VIEW AS MUCH AS POSSIBLE.
3. TREE MOUNTED FIXTURES, WIRING TO BE CONCEAL AS BEST AS POSSIBLE AND COMBINED TOGETHER FOR A CLEANER INSTALLATION
4. FOR AREAS WHERE FIXTURES ARE BEING INSTALLED IN SOFT GROUND, THE MOUNTING ACCESSORIES MIGHT NEED TO BE CHANGED DUE TO THE WEIGHT OF THE FIXTURES OR A SMALL CONCRETE PAD ADDED FOR MORE STABILITY TO FIXTURE
5. ALL WIRING TO BE CONCEALED FROM VIEW AND LOCATED ON SITE IN ACCORDANCE WITH LOCAL CODES
6. NO TREE STRAPS TO BE USED ON TREES, SURFACE MOUNTED BOXES WITH STAINLESS STEEL SCREWS TO MINIMIZE DAMAGE TO TREES AND AFFECT ON TREE MATURITY
7. RECOMMEND MAINTENANCE TO BE PROVIDED BY A LOCAL CONTRACTOR TO ENSURE FIXTURES ARE KEPT IN PROPER WORKING CONDITION.
8. IN GRADE UPLIGHTS TO BE INSTALLED PER MANUFACTURER RECOMMENDATION TO ENSURE PROPER WET LISTED RATING



PROJECT INFORMATION CHECKLIST

Project Information: (Name and location)

Billing (Who the design fee will be sent to)

Name, Company, e-mail address:

DOCUMENTS (Needed to start design layout services)

- Site Plan** (CAD preferred, PDF can be supplied but might add time to deliverable depending on project size)
- Tree legend or call outs** (Will help us understand size, canopy size, tree seasonal changes and how that affects the look and feel)
- Pathways**-(Either called out on plan or if no plan available a google image that helps us understand how you move thru the site)
- Interior Plans**- If adjacent to a home, what are the most prominent views from inside, this will help us give hierchy to the landscape
- Hardscape/furniture**- Clearly called out seating areas, concrete benches or elements, anything that will help us understand the space and identify lighting oportunities.

DESIGN (if specific products are requested)

Accentlights:

- ART0AL08 ART0AL11 ART0A16

Flood, Wallwash:

- ART0FL08 ART0FL16

Pathways:

- ARTOPLLT ARTOPLMB-R1 ARTOPLMB-R2 ARTOPL11

Finish (black standard unless otherwise specified)

- Aluminum Black Aluminum Bronze

CCT

- 3000K

SERVICES

Flat Design Fee: \$1000

Design Credit: 50% of design fee credit back if cost of overall package is \$3500 or less. 100% of design fee credit back if cost of overall package is \$5000 or more.

Deliverables & Notes

Standard delivery 2 weeks from **date of invoice approval**. Invoice will be sent after drawings and check list are received

Any additional information from design team like special features or areas that need to be highlighted would be greatly appreciated if communicated in desgin request e-mail.